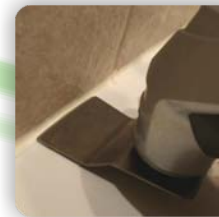
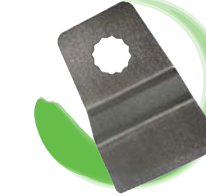


Multi2PRO
Cordless Multi-tool

**Stainless Steel Scraper
(MT1-AC14)**

Removes old vinyl, wood or other floor coverings, paint and coatings, residues and separating laminated layers. Cuts carpet.

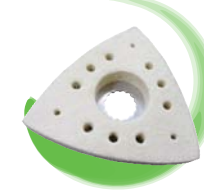


- Removes floor covering/adhesive residue, Carpet adhesive residues, coating or other stubborn substances that won't move with traditional rigid stopping knives.
- Removes sealants; the knife is perfect for removing elastic materials, such as sealants, adhesive residue and paint, all over the house.

Multi2PRO
Cordless Multi-tool

Felt Polishing Pad (MT1-AC16)

For paste application and polishing delicate surfaces into tight corners.



- No matter if the surface is; painted, chrome, wood or stone, the felt polishing pad brings excellently bright shine to the surfaces.



Multi2PRO
Cordless Multi-tool

**Segment Saw Blade
80mm or 3 1/8" (MT1-AC13)**

Linear and plunge cutting. Flat on one side so you can cut into corners and flush against adjoining surfaces.



- Old windows can be effortlessly removed and renovated. Removal of brittle puttied corners without any danger to the glass.
- Small chopping is effortless with the segment saw blade.
- Make plunge cuts into any non ferrous material, and cut into a corner using the removed segment.

Multi2PRO
Cordless Multi-tool

Universal End Cut, 34mm or 1 3/8" (MT1-AC11)

will cut ferrous metals. (MT1-AC12) thinner for non-ferrous metals Both plunge cut up to 40mm or 1 3/8" deep.

10mm or 3/8" (MT1-AC15)
Will cut non-ferrous metals, plunge cuts up to 25mm or 1" deep.



- Cuts all types of material, real wood, laminate or composite materials, the universal E-CUT saw blade can cut everything, right to the edge.
- With the universal E-CUT; fitting floors, replacing pipes, adding trim, chopping, cutting pockets, fitting electrical outlets etc was never easier. You will find hundreds of uses for these saws.
- With the thinner universal E-CUT blade you can cut small pockets, cut in small locations and trim with extreme precision.

Multi2PRO
Cordless Multi-tool

Carbide Grit Semicircle Saw Blade, 65mm or 2 1/2" (MT1-AC01)

Removing grout, cutting and shaping plaster, porous concrete and masonry. Flat on one side so you can cut into corners and flush against adjoining surfaces.

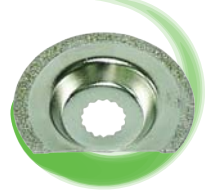


- This blade can be used for removing tile joints and general cutting or grinding of most hard materials, the segment shape allows the blade to get right into the corners and up to edges without over cutting. Carbide is extremely hard wearing, so this blade should cut for many hours without a drop in performance.

Multi2PRO
Cordless Multi-tool

Diamond-Coated Semicircle Saw Blade 65mm or 2 1/2" (MT1-AC02)

Removing grout, cutting and shaping plaster, porous concrete and masonry. Scoring and cutting for a precise fit. Flat on one side so you can cut into corners and flush against adjoining surfaces.



- In addition to the features of the carbide grit semicircle saw blade, the diamond-coated semicircle saw will impress you with its noticeably higher service life. It is also more suitable for outdoor use, it is frost resistant and can be used on sealant materials containing epoxy resin.

Multi2PRO
Cordless Multi-tool

**Sanding Finger Pad (MT1-AC06)
Sanding Finger Sheets (40, 80, 120,
180, 220) (MT1-AC07)**

The finger sanding pad holds sanding sheets for detailed sanding in small areas and corners. Their small size and fine tip enables them to reach tight surfaces.

- Sand in tight spaces, the sanding finger works perfectly for tight or hidden spots.
- The flat sanding pad also gives you access to tight spaces, e.g. the slats of shutters.

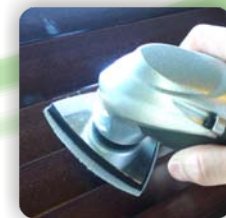


Multi2PRO
Cordless Multi-tool

**Sanding Pad (MT1-AC09)
Sanding Sheets (40, 80, 120, 180)
(MT1-AC10)**

This sanding pad holds triangular sheets for corners and detailed sanding.

- Sanding and profiling, reach into corners, when one of the three corners is worn out, simply remove and turn to the next.
- Finish larger surfaces with a variety of gritted sheets.



Multi2PRO
Cordless Multi-tool

**Carbide Rasp Finger
(MT1-AC03)**

Coarse grinding or rasping, aggressive material removal in small, tight areas.

- Sand down cement, concrete, stone, plaster, tile adhesive, paint and wood, use the carbide finger rasp to save yourself time and difficult manual work.

- Can be used to flatten surfaces in confined areas, the carbide rasp is a great all-round accessory for tiling. It can smooth adhesive glue and grind tiled edges to ensure a flat supporting surface when replacing tiles.



Multi2PRO
Cordless Multi-tool

**Triangular Carbide Rasp
(MT1-AC04)**

Coarse grinding or rasping, aggressive material removal over larger areas.

- Sand down cement, concrete, stone, plaster, tile adhesive, paint and wood, use the carbide rasp to save yourself time and difficult manual work.

- Can be used to flatten large surfaces, the carbide rasp is a great all-round accessory for tiling and shaping. It can smooth adhesive glue and grind tiled edges to ensure a flat supporting surface when replacing tiles.



**Blade Adaptor Washer
(MT1-AC17)**

Fits any tool/accessory in the market to Multi2PRO

Fit this washer to allow the CEL Multi2PRO product to take other manufacturers blades and accessories. Align the pentagon cutout on the adaptor with the output drive of the Multi2PRO then fit the accessory using the washer and bolt. Now you can use your favourite tool, or accessory and take advantage of specialist products.

Enquiries:
C Enterprise (UK) Limited
Tel: +44 8453 88 97 69
sales@cel-uk.com

C Enterprise USA, LLC
Tel: +1 864 506 3982
sales@cel-global.com

C Enterprise (HK) Limited
Tel: +852 27962799
sales@cel-global.com

www.CEL-global.com

CEL
C Enterprise Ltd

Multi2PRO
Cordless Multi-tool

**Accessory
Guide**

Not all accessories in this guide are included in the standard set.
Please Refer to your Owner's Manual of your tool for the accessories that are included.

CEL
C Enterprise Ltd